

38th TRADITIONAL CONFERENCE OF THE PUBLIC AGRICULTURAL ADVISORY SERVICE (PAAS)

Conference of the Public Agricultural Advisory Service (PAAS) and the European Innovation Partnership (EIP) event

Agricultural Extension in Germany at the example of Lower Saxony

**Stefan Ortmann,
Chamber of Agriculture of Lower Saxony**

Landwirtschaftskammer
Niedersachsen



Bled,
21th – 22th
November 2023



REPUBLIC OF SLOVENIA
MINISTRY OF AGRICULTURE,
FORESTRY AND FOOD



Evropski kmetijski sklad za razvoj podeželja: Evropa investira v podeželje



Who offers agricultural advisory in Germany?

State/Government

Official
Advisory

Ministry of
Agriculture

Public
research
facilities

Self-Administration + governmental mission

Advisory by
Chambers
of
Agriculture

Private Sector

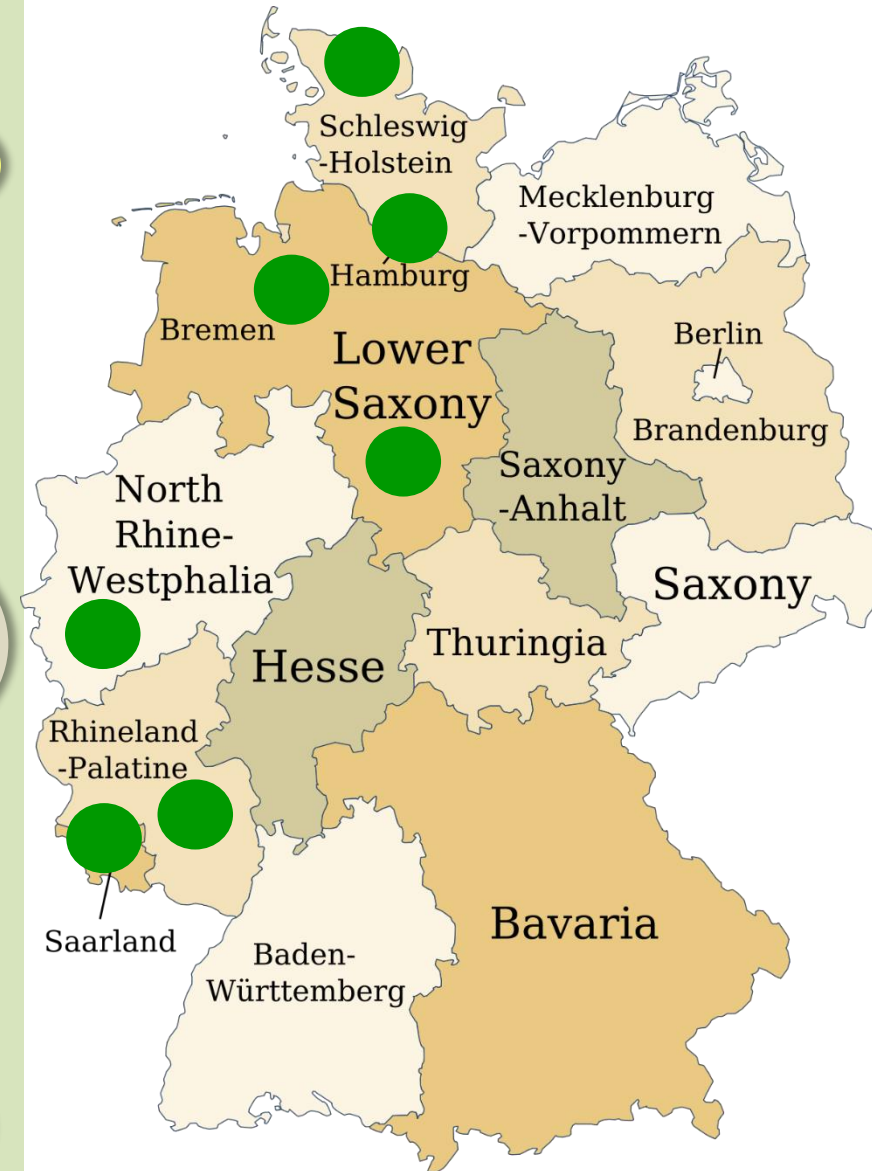
Professional
Advisory

Interest
Groups

Associations
of several
small
companies

Private
Companies

Advisory
rings

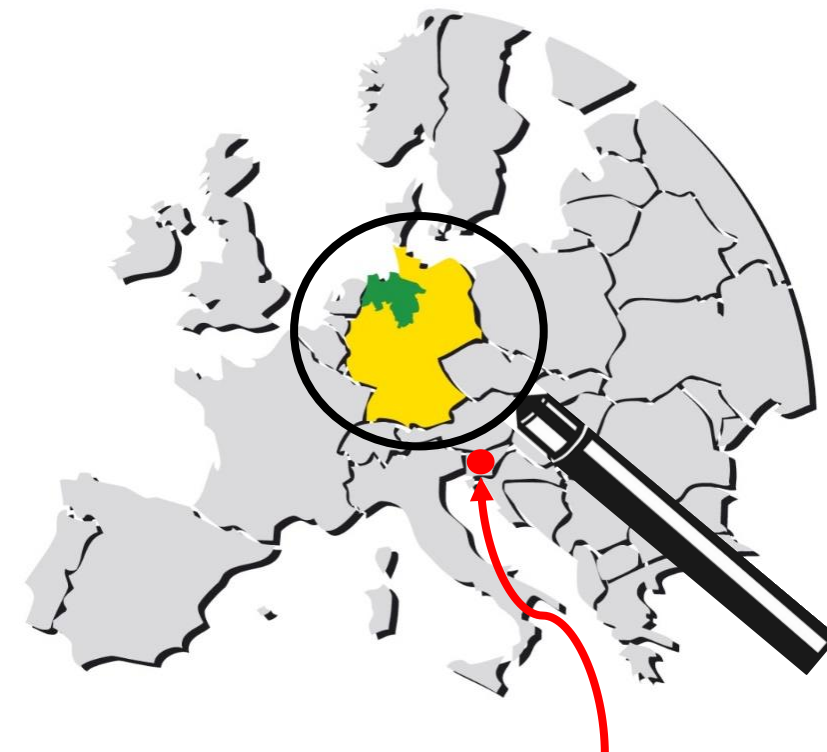


Focus: Agriculture of Lower Saxony

Structure: Plant production in the south, livestock and dairy industry in the north

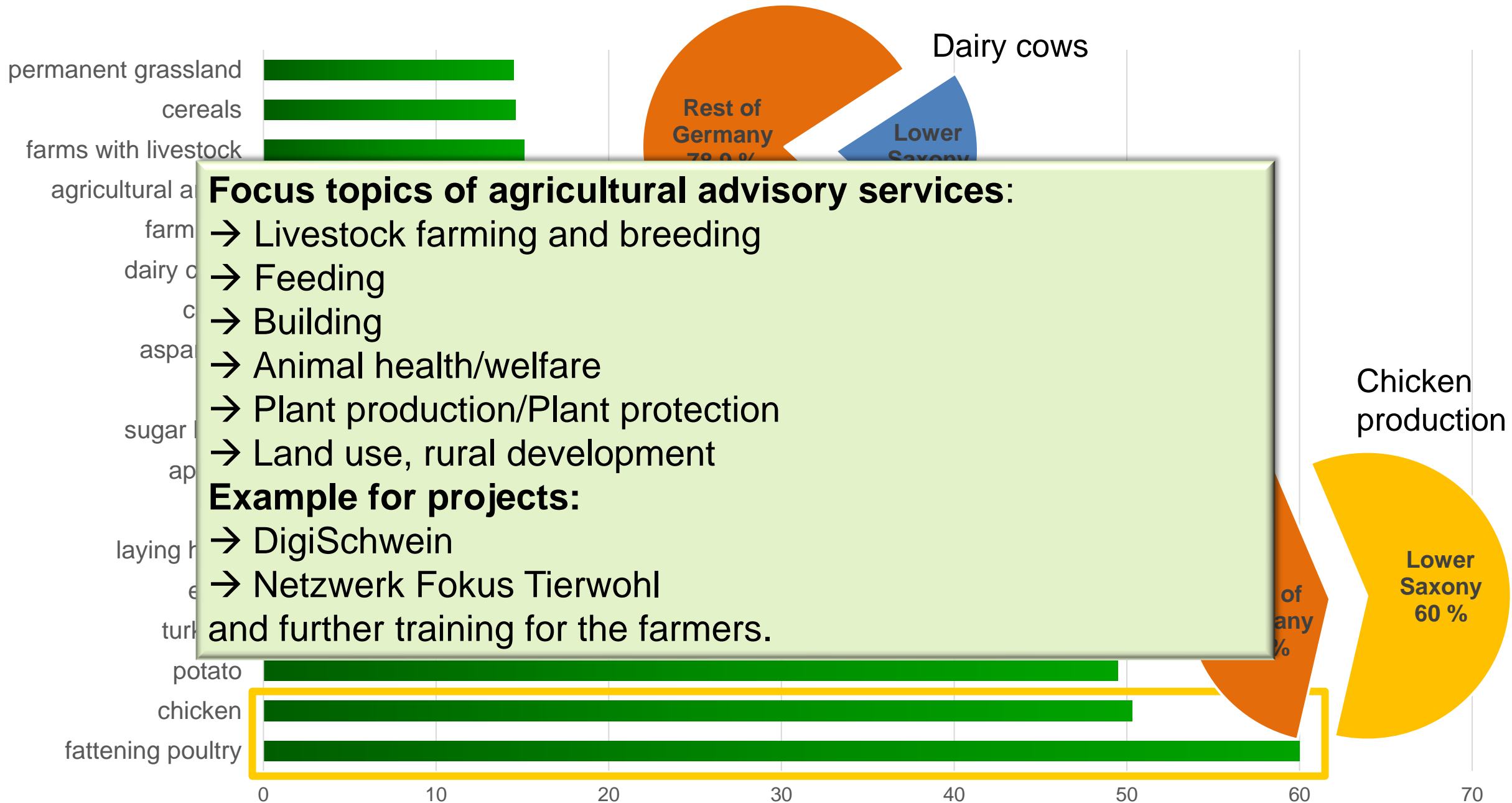


- Main activity: food processing
- Main activity: grassland farming
- Main activity: wheat production
- Main activity: potato production in livestock
- Combined activities in livestock farming and agriculture



Slovenia

Lower Saxony's share of Agriculture in Germany (in percent)



Unique Sales Proposition

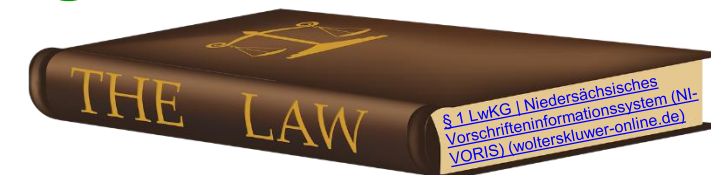
- We are an **area-wide organisation** – close to the farmers with strong networks in Germany and Europe
- We are professionally **competent, independent, impartial** and **always focusing on regional needs of farmers**. We provide efficient knowledgeflows.
- Our knowledge is based on **research and project establishment according to official standards**.
- We live a close **cooperation** between farmers and professional experts in the institution of chamber.
- **Based on the special law on the Lower Saxony Chamber of Agriculture.**

The **administrative centres**:
The Chamber of Agriculture is organised into **local offices**.



The special law on the Lower Saxony Chamber of Agriculture

Mission:



... to support agriculture and all persons working in agriculture from a professional point of view and to represent their professional interests and to work for the development of rural areas... (§2 (1) LwKG)

Instruments:

Advice, training for customers and advisors and services

for competitive, sustainable agriculture and a productive and sustainable rural area

Tasks for the government,

to ensure a legal scope of action for farmers

Base of knowledge

up-to-date expertise from practical experience, our own agricultural experimentations, projects and networks

→ Provider of knowledge from **trusted resources**

Members & Customers

Our Organisation

The Chamber is a self-administration organisation.

professionally-based

Chamber Assembly

168 elected and appointed honorary member/farmers

Board and President

Director

Administration

Grants

Agriculture

Forestry

Horticulture

LUFA North-West

About 2.400 Employees

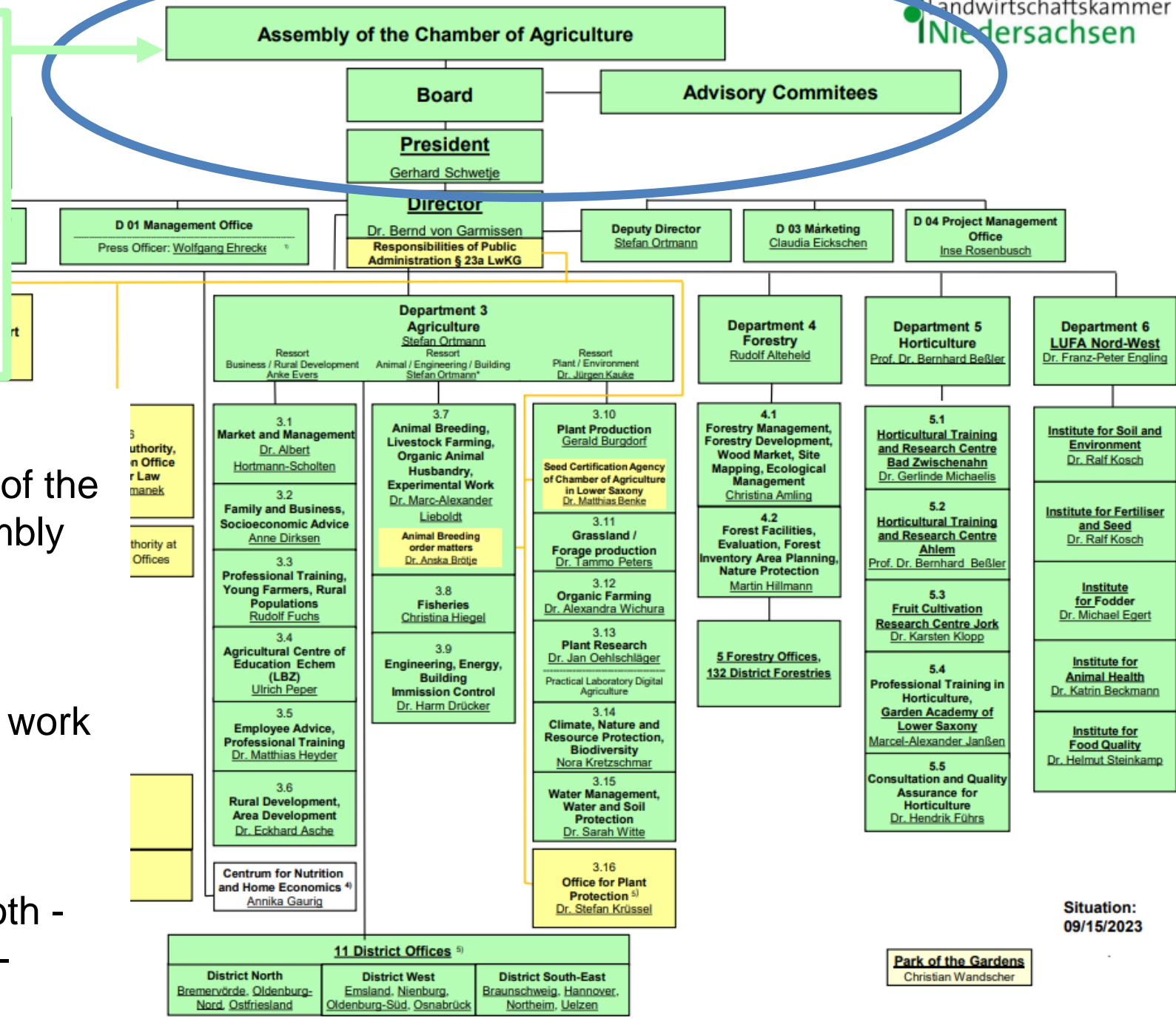
In the Central offices, District and Branch offices, Forestry offices, Institutes, Education Centres, Research centres

LUFA: Agricultural inspection and research institute

- In the Chamber of Agriculture, honorary, **elected representatives of professions and full-time professionals** work closely together (Two-thirds of the total of 168 honorary members are agricultural entrepreneurs and the rest are employed in agriculture and forestry.).
- **Self-Administration Services for farmers and Tasks of Authority** at same time in one organization.

Honorary

- Highest decision-making body (elects a president and the members of the board every three years).



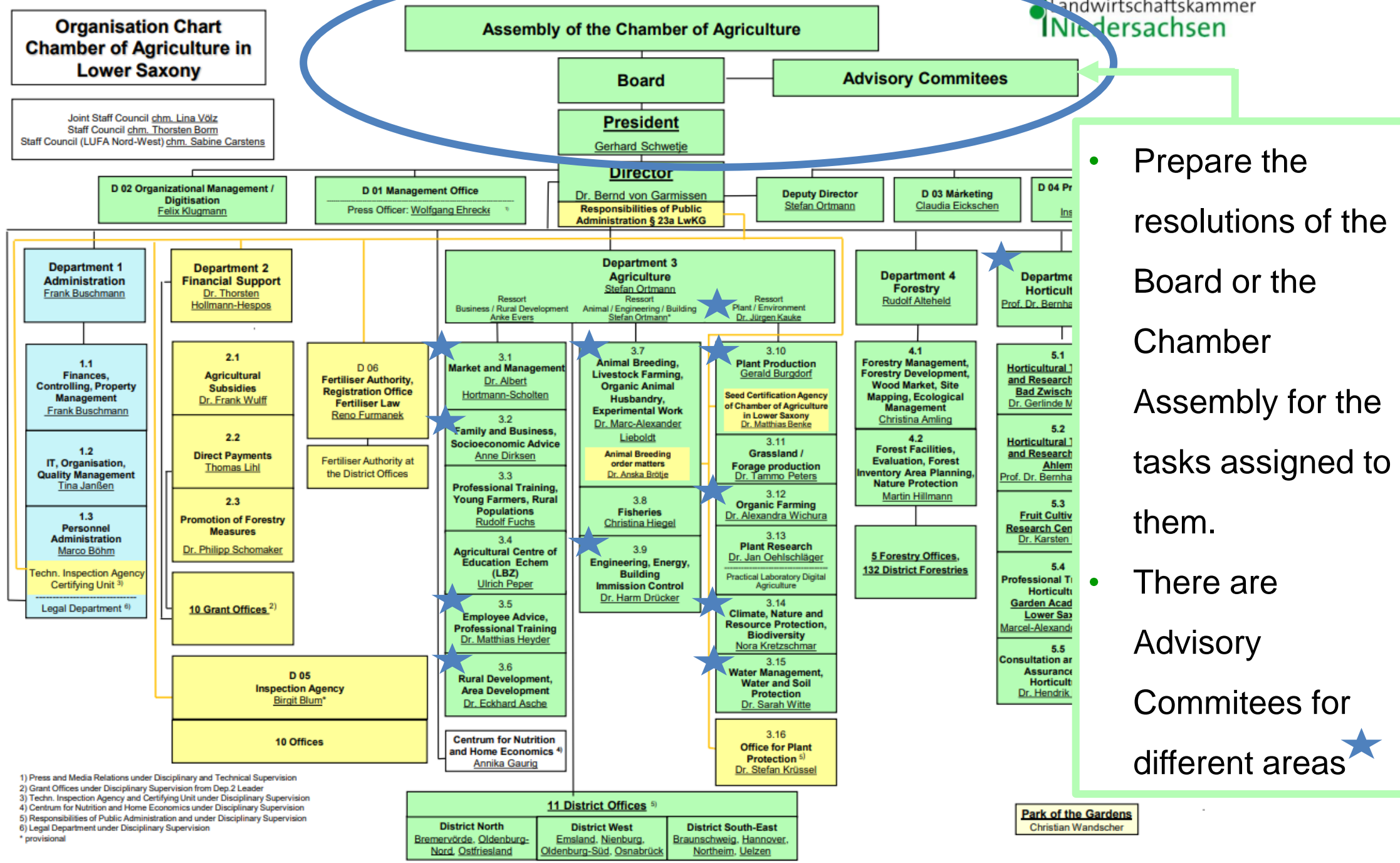
The President

- is the chairman of the Chamber Assembly and the Board.
- is the highest authority for the employees who work in the Chamber.
- represents the Chamber of Agriculture in both - judicial and non-judicial matters.



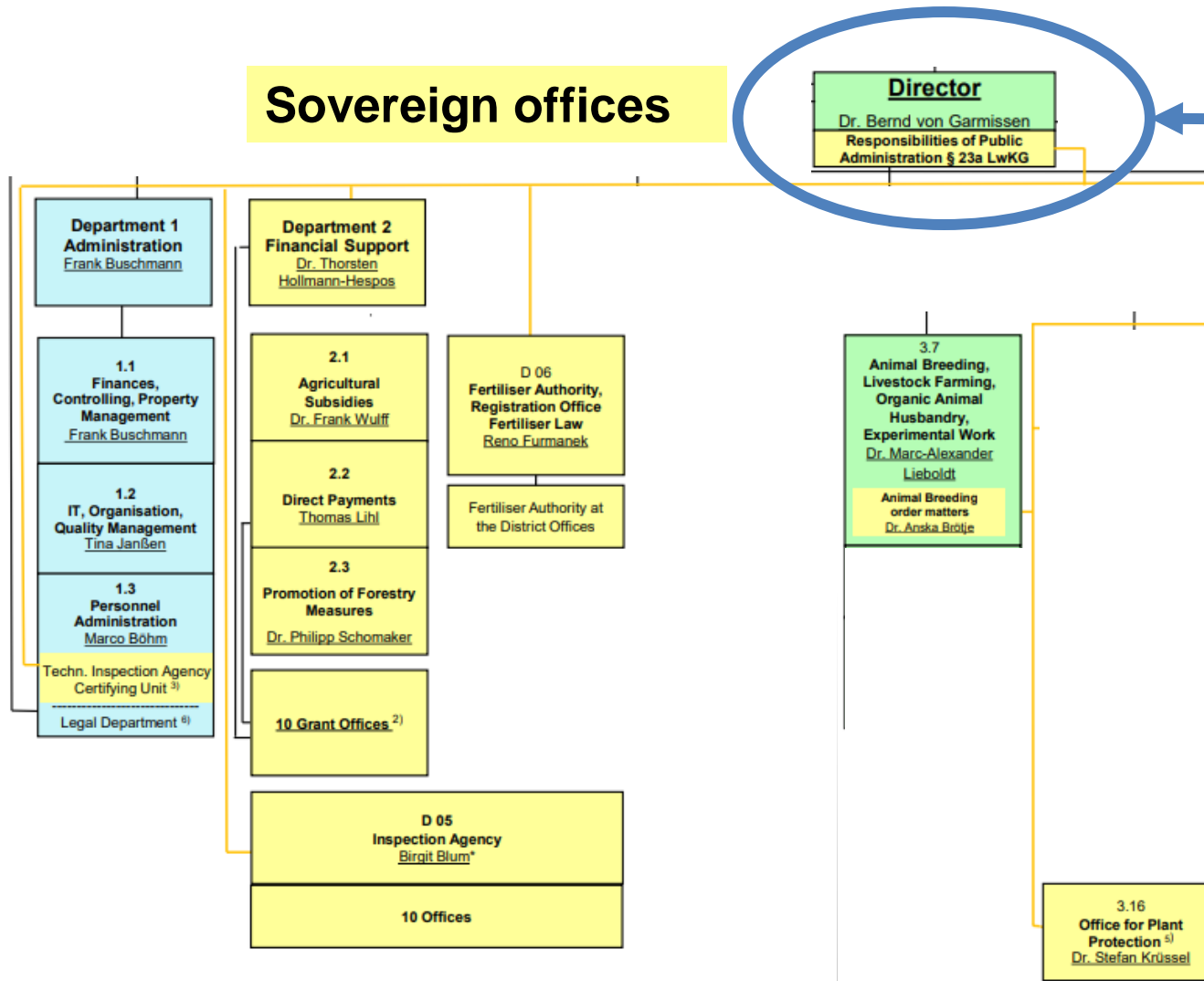
Organisation Chart Chamber of Agriculture in Lower Saxony

Joint Staff Council *chm. Lina Völz*
Staff Council *chm. Thorsten Borm*
Staff Council (LUFA Nord-West) *chm. Sabine Carstens*



- Prepare the resolutions of the Board or the Chamber Assembly for the tasks assigned to them.
- There are Advisory Committees for different areas

1) Press and Media Relations under Disciplinary and Technical Supervision
2) Grant Offices under Disciplinary Supervision from Dep.2 Leader
3) Techn. Inspection Agency and Certifying Unit under Disciplinary Supervision
4) Centrum for Nutrition and Home Economics under Disciplinary Supervision
5) Responsibilities of Public Administration and under Disciplinary Supervision
6) Legal Department under Disciplinary Supervision
* provisional



The Director

- is the Commissioner of the State Government.
- is the General Manager of all day-to-day business.
- is the Senior of all staff employed by the Chamber of Agriculture.



Wide Range of Tasks and Services

- **Advice, financial support administration and professional training.**
- **Research and project establishment according to official standards.**
- Service for market analysis and agricultural market reports.
- **Professional education and training:** offer of more than 500 seminars each year, master courses and conferences, farm demonstrations as well as field trips.
- Commissioned by the federal state to be the **competent authority** with respect to more than 50 laws, regulations and programs (administration, control and observation etc.).
- **Vocational Training authority:** more than twenty trainees each year to learn the basics of seven professional qualifications.
- **Education of Trainees in administration, networking and advisory methods.**



Focus: For whom we work?

Farmers are members and customers at the same time.



about 50,000 enterprises in agriculture and forestry

150 aquaculture enterprises

50,000 private woodland owners

50 inland fisheries

4,000 horticultural enterprises

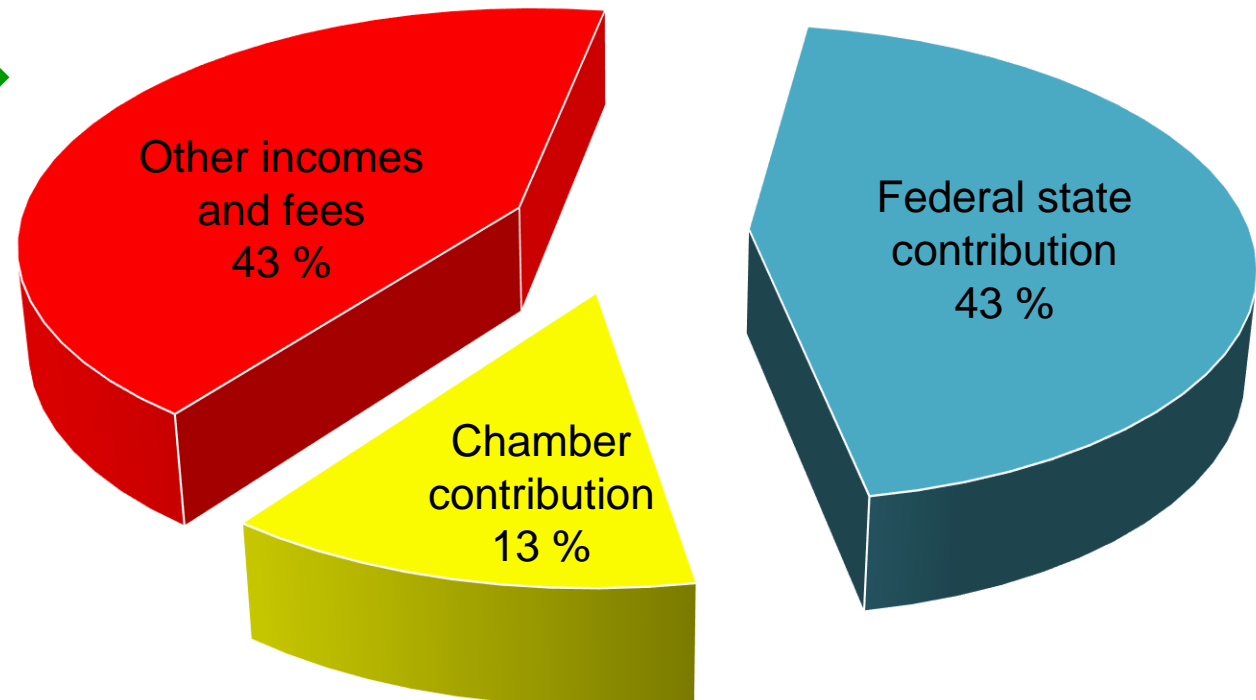
2.6 million hectares of agricultural land

500,000 hectares of private woodland

130 mixed coastal and small deep-sea fisheries

The budget of the Chamber for 2023: 217 million euros.

Advisory services account for around 23 million euros of total sales.



In Lower Saxony, advisory gets public support with 10 Mio. Euros (about 1 % of the ELER funds). The Chamber of Agriculture in Lower Saxony has about 300.000 Euro at disposal (from 2023-2026).

Germany: Association of Chambers of Agriculture

Key player in Germany to network and to exchange knowledge between actors from public and private advisory organisations (chambers + federal state agencies).

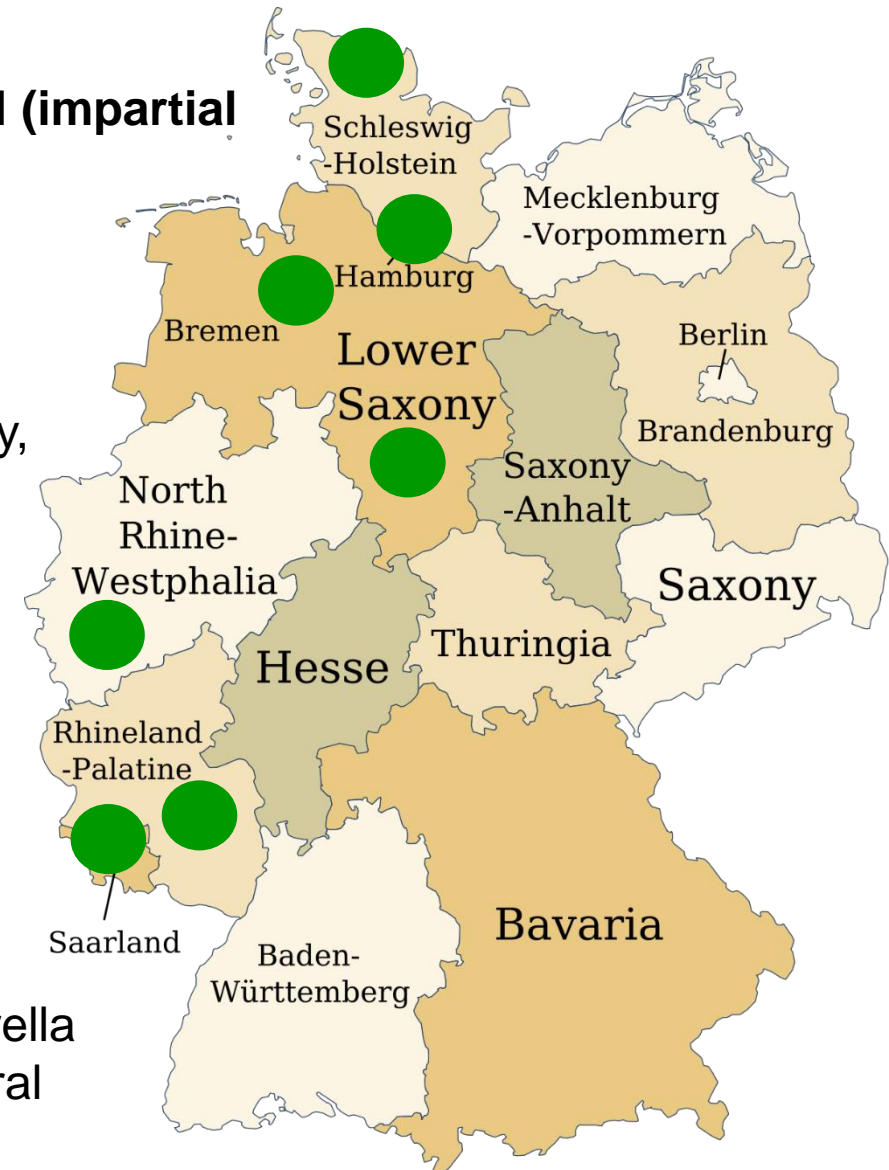
Provides the framework for joint meetings at national level (impartial platform function).

- **7 Chambers of Agriculture are Members**

- Schleswig-Holstein, Hamburg, Bremen, Lower Saxony, North Rhine-Westphalia, Rhineland-Palatinate and Saarland + Bavarian Farmers' Association and German Agricultural Society

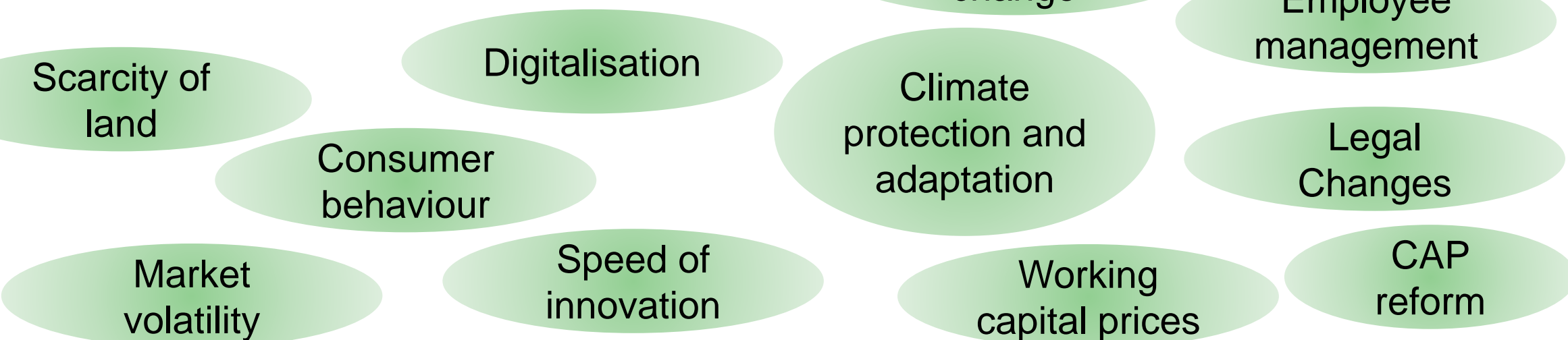
- **Tasks and main areas of activity**

- Representation of the interests of the chambers of agriculture at federal and European level
- Technical statements to specialised ministries (e.g. agriculture or environment)
- Co-operation with the other German agricultural umbrella organisations (DBV, DRV, DLG and ZVG) in the Central Committee of German Agriculture



Challenges in Agriculture and Advisory

- To get skilled labour is a major challenge and will become even more important in future.
- Complex agricultural policy → advisors must explain the applicable law for better CAP implementation (leads to less error rates).
- An advisor must be familiar with many topics.



The Chamber of Agriculture

If you want to compete you know where to go....

Efficient competent advisory services in a broad range of topics under one roof!

For a more knowledge and sucesfull based future agriculture!

It makes sense for every country in Europe!

